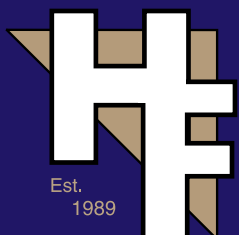


Dairy Judging

VOLUME 2



**HOLSTEIN
FOUNDATION**

"Developing Dairy Leaders for Tomorrow"

This Dairy Judging workbook is designed to help individuals develop a system to effectively evaluate dairy cattle conformation, as well as providing guidance in preparing oral reasons. Dairy judging can be a rewarding activity for people of all ages, and teaches valuable communication and critical thinking skills to those who participate.

The Holstein Foundation's mission is to promote and support programs that develop leadership for the dairy industry. The Holstein Foundation offers a variety of programs to youth, young adults and farm families. Current programs targeting youth include the popular Dairy Bowl and Dairy Jeopardy competitions. The Foundation also focuses on youth education and outreach activities, offering free workbooks, and ribbons for local fairs.



www.holsteinfoundation.org

INDEX

DAIRY CATTLE JUDGING

Dairy Cow Unified Scorecard	5
Four Major Breakdowns	7
Terminology	9
Judging Dairy Heifers	17
Preparing for a Judging Contest	19
Preparing and Presenting Oral Reasons.....	20
Practice Class of Holstein Five-Year-Olds	27
Official Placing and Reasons on Five-Year-Olds	30
Assigning Cuts and Scoring Placings.....	31
Linear Evaluation	32

PRACTICE ACTIVITIES & COACHES RESOURCES

Parts of a Cow	36
What's Your Favorite Term?	37
Placing Cards	38
Beginners' Reasons Worksheet.....	39
Note-Taking Worksheet.....	40
Practice Linear Evaluation Score Sheet.....	41
Linear Descriptive Traits	42
Answer Key for Activity Sheets	43

JUDGING DAIRY COWS

Dairy judging is an activity that allows you to have fun while building dairy knowledge and developing other important skills such as public speaking, critical thinking, decision making and self-confidence.

Many different aspects of dairy judging are covered in this book:

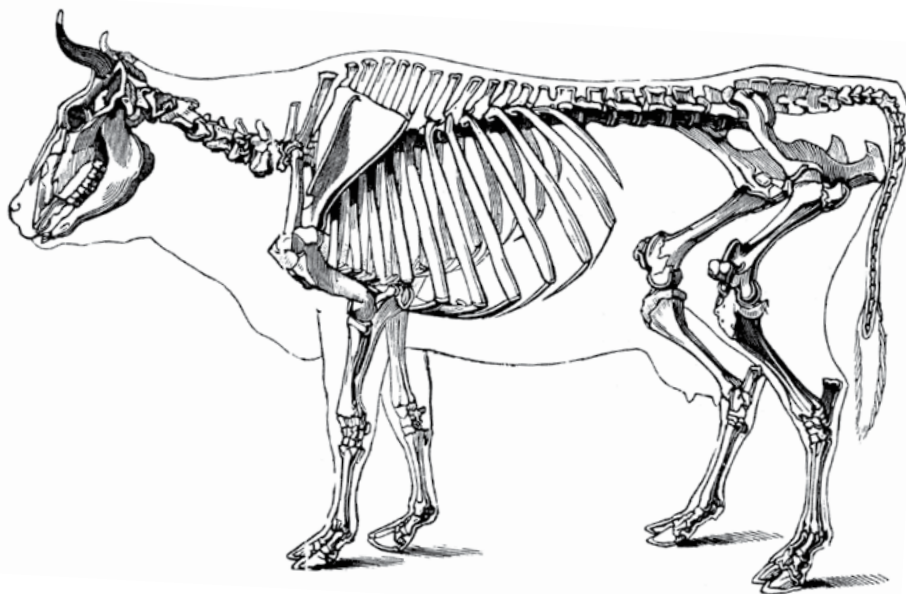
- Dairy Cow Unified Scorecard and major breakdowns
- Dairy judging terminology
- Preparing oral reasons
- Linear evaluation of dairy cattle
- Plus many worksheets and helpful tips to help you build and refine your skills

**See Page 36 for
the Parts of a Cow
Activity Worksheet**

A fundamental first step in learning to judge dairy cattle is to develop a thorough knowledge of dairy cattle anatomy – both internal and external. This will help you see relationships between the different parts of the body, and also help in developing your terminology.

Below you will see a diagram of a cow's skeletal system, and on the next page, on the Dairy Cow Unified Scorecard, you will see a diagram that will help you learn the body parts of a cow. Compare the two side-by-side and see how the bone structure affects what you see in the frame of the cow.

Once you think you've mastered bovine anatomy, turn to page 36 for the "Parts of a Cow" activity. If you have a chance, using your favorite cow or heifer, see if you can name all the parts on a living dairy animal.



DAIRY COW UNIFIED SCORECARD

Breed characteristics should be considered in the application of this scorecard.

MAJOR TRAIT DESCRIPTIONS

There are four major breakdowns on which to base a cow's evaluation. Each trait is broken down into body parts to be considered and ranked.

1) Frame - 15%

The skeletal parts of the cow, with the exception of rear feet and legs. Listed in priority order, the descriptions of the traits to be considered are as follows:

Rump (5 points): Should be long and wide throughout. Pin bones should be slightly lower than hip bones with adequate width between the pins. Thurls should be wide apart. Vulva should be nearly vertical and the anus should not be recessed. Tail head should set slightly above and neatly between pin bones with freedom from coarseness. **Front End (5 points):** Adequate constitution with front legs straight, wide apart, and squarely placed. Shoulder blades and elbows set firmly against the chest wall. The crops should have adequate fullness blending into the shoulders. **Back/Loin (2 points):** Back should be straight and strong, with loin broad, strong, and nearly level. **Stature (2 points):** Height including length in the leg bones with a long bone pattern throughout the body structure. Height at withers and hips should be relatively proportionate. Age and breed stature recommendations are to be considered. **Breed Characteristics (1 point):** Exhibiting overall style and balance. Head should be feminine, clean-cut, slightly dished with broad muzzle, large open nostrils and strong jaw.

2) Dairy Strength - 25%

A combination of dairyness and strength that supports sustained production and longevity. Major consideration is given to general openness and angularity while maintaining strength, width of chest, spring of fore rib, and substance of bone without coarseness. Body condition should be appropriate for stage of lactation. Listed in priority order, the descriptions of the traits to be considered are as follows:

Ribs (8 points): Wide apart. Rib bones wide, flat, deep, and slanted towards the rear. Well sprung, expressing fullness and extending outside the point of elbows. **Chest (6 points):** Deep and wide floor showing capacity for vital organs, with well-sprung fore ribs. **Barrel (4 points):** Long, with adequate depth and width, increasing toward the rear with a deep flank. **Thighs (2 points):** Lean, incurving to flat and wide apart from the rear. **Neck (2 points):** Long, lean, and blending smoothly into shoulders; clean-cut throat, dewlap, and brisket. **Withers (2 points):** Sharp with chine prominent. **Skin (1 point):** Thin, loose, and pliable.

3) Rear Feet and Legs - 20%

Feet and rear legs are evaluated. Evidence of mobility is given major consideration. Listed in priority order, the descriptions of the traits to be considered are as follows:

Movement (5 points): The use of feet and rear legs, including length and direction of step. When walking naturally, the stride should be long and fluid with the rear feet nearly replacing the front feet. **Rear Legs-Side View (3 points):** Moderate set (angle) to the hock. **Rear Legs-Rear View (3 points):** Straight, wide apart with feet squarely placed. **Feet (3 points):** Steep angle and deep heel with short, well-rounded closed toes. **Thurl Position (2 points):** Near central placement between the hip and pin bones. **Hocks (2 points):** Adequate flexibility with freedom from swelling. **Bone (1 point):** Flat and clean with adequate substance. **Pasterns (1 point):** Short and strong with some flexibility, having a moderate, upright angle.

4) Udder - 40%

The udder traits are evaluated. Major consideration is given to the traits that contribute to high milk yield and a long productive life. Listed in priority order, the descriptions of the traits to be considered are as follows:

Udder Depth (10 points): Moderate depth relative to the hock with adequate capacity and clearance. Consideration is given to lactation number and age. **Rear Udder (9 points):** Wide and high, firmly attached with uniform width from top to bottom and slightly rounded to udder floor. **Teat Placement (5 points):** Squarely placed under each quarter, plumb and properly spaced. **Udder Cleft (5 points):** Evidence of a strong suspensory ligament indicated by clearly defined halving. **Fore Udder (5 points):** Firmly attached with moderate length and ample capacity. **Teats (3 points):** Cylindrical shape; uniform size with medium length and diameter; neither short nor long is desirable. **Udder Balance and Texture (3 points):** Udder floor level as viewed from the side. Quarters evenly balanced; soft, pliable, and well collapsed after milking. (Note: In the Holstein breed, an equal emphasis is placed on fore and rear udder (7 points each). All other traits are the same as listed above.)

TOTAL

Perfect
Score

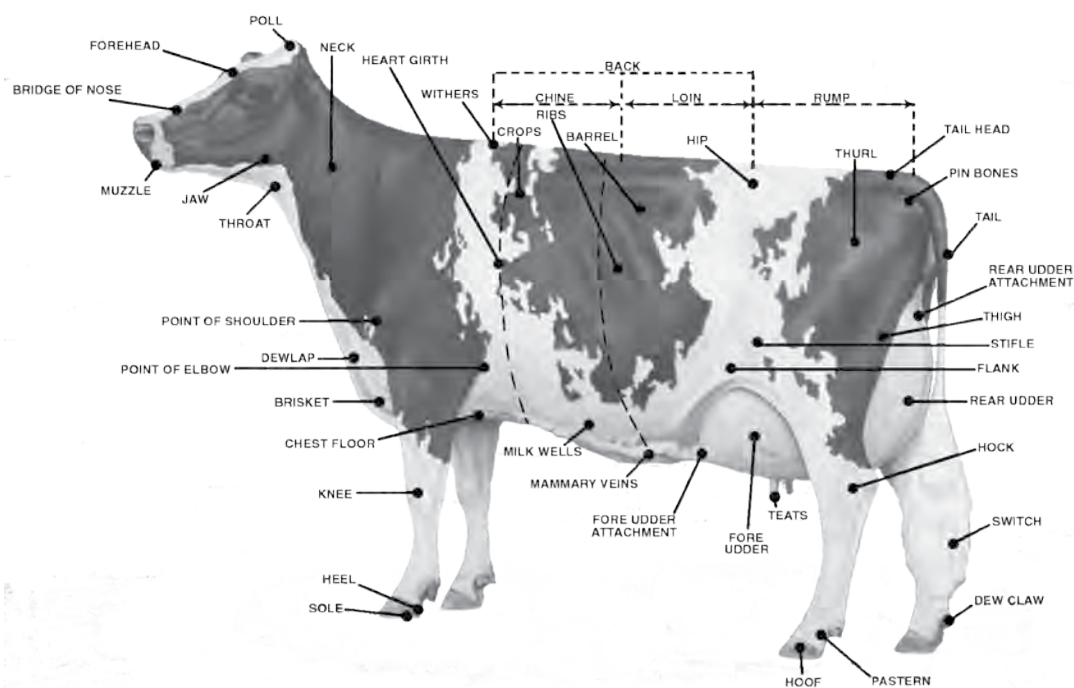
15

25

20

40

100



THE SEVEN BREEDS



Ayrshire



Brown Swiss



Guernsey



Red & White



Holstein



Jersey



Milking Shorthorn

BREED CHARACTERISTICS

Except for differences in color, size, and head character, all breeds are judged on the same standards as outlined in the Unified Score Card. If any animal is registered by one of the dairy breed associations, no discrimination against color or color pattern is to be made.

Ayrshire Strong and robust, showing constitution and vigor, symmetry, style and balance throughout, and characterized by strongly attached, evenly balanced, well-shaped udder.

HEAD- clean cut, proportionate to body; broad muzzle with large, open nostrils; strong jaw; large, bright eyes; forehead, broad and moderately dished; bridge of nose straight; ears medium size and alertly carried.

COLOR- light to deep cherry red, mahogany, brown, or a combination of any of these colors with white, or white alone, distinctive red and white markings preferred.

SIZE- a mature cow in milk should weigh at least 1200 lbs.

Brown Swiss Strong and vigorous, but not coarse. Adequate size with dairy quality. Frailness undesirable.

HEAD- clean cut, proportionate to body; broad muzzle with large, open nostrils; strong jaw; large, bright eyes; forehead, broad and slightly dished; bridge of nose straight; ears medium size and alertly carried.

COLOR- body and switch solid brown varying from very light to dark; muzzle has black nose encircled by a white ring; tongue and hooves are dark brown to black.

SIZE- a mature cow in milk should weigh at least 1400 lbs.

Guernsey Strength and balance, with quality and character desired.

HEAD- clean cut, proportionate to body; broad muzzle with large, open nostrils; strong jaw; large, bright eyes; forehead, broad and slightly dished; bridge of nose straight; ears medium size and alertly carried.

COLOR- shade of fawn and white markings throughout clearly defined.

SIZE- a mature cow in milk should weigh 1200-1300 lbs.; Guernsey does not discriminate for lack of size.

FACTORS TO BE EVALUATED

The degree of discrimination assigned to each defect is related to its function and heredity. The evaluation of the defect shall be determined by the breeder, the classifier or judge, based on the guide for discrimination and disqualifications given below.

HORNS

No discrimination for horns.

EYES

1. Blindness in one eye: *Slight discrimination.*
2. Cross or bulging eyes: *Slight discrimination.*
3. Evidence of blindness: *Slight to serious discrimination.*
4. Total blindness: *Disqualification.*

WRY FACE

Slight to serious discrimination.

CROPPED EARS

Slight discrimination.

PARROT JAW

Slight to serious discrimination.

SHOULDERS

Winged: *Slight to serious discrimination.*

CAPPED HIP

No discrimination unless affects mobility.

TAIL SETTING

Wry tail or other abnormal tail settings: *Slight to serious discrimination.*

LEGS AND FEET

1. Lameness- apparently permanent and interfering with normal function: *Disqualification.*
- Lameness- apparently temporary and not affecting normal function: *Slight discrimination.*
2. Evidence of crampy hind legs: *Serious discrimination.*
3. Evidence of fluid in hocks: *Slight discrimination.*
4. Weak pastern: *Slight to serious discrimination.*
5. Toe out: *Slight discrimination.*

UDDER

1. Lack of defined halving: *Slight to serious discrimination.*
2. Udder definitely broken away in attachment: *Serious discrimination.*
3. A weak udder attachment: *Slight to serious discrimination.*
4. Blind quarter: *Disqualification.*
5. One or more light quarters, hard spots in udder, obstruction in teat (spider): *Slight to serious discrimination.*

Red & White Rugged, feminine qualities in an alert cow possessing adequate size and vigor.

HEAD- clean cut, proportionate to body; broad muzzle with large, open nostrils; strong jaw; large, bright eyes; forehead, broad and slightly dished; bridge of nose straight; ears medium size and alertly carried.

COLOR- must be clearly defined red and white; black-red and brindle is strictly prohibited.

SIZE- a mature cow in milk should weigh at least 1400 lbs. and be well balanced.

Holstein Rugged, feminine qualities in an alert cow possessing Holstein size and vigor.

HEAD- clean cut, proportionate to body; broad muzzle with large, open nostrils; strong jaw; large, bright eyes; forehead, broad and moderately dished; bridge of nose straight; ears medium size and alertly carried.

COLOR- black and white or red and white markings clearly defined

SIZE- a mature cow in milk should weigh at least 1400 lbs.

UDDER- equal emphasis is placed on fore and rear udder (7 points each), all other traits are the same as listed on the PDCA scorecard.

Jersey Sharpness with strength indicating productive efficiency.

HEAD- proportionate to stature showing refinement and well chiseled bone structure. Face slightly dished with dark eyes that are well set.

COLOR- some shade of fawn with or without white markings; muzzle is black encircled by a light colored ring; switch may be either black or white.

SIZE- a mature cow in milk should weigh at least 1000 lbs.

Milking Shorthorn Strong and vigorous, but not coarse.

HEAD- clean cut, proportionate to body; broad muzzle with large, open nostrils; strong jaw; large, bright eyes; forehead, broad and slightly dished; bridge of nose straight; ears medium size and alertly carried.

COLOR- red or white or any combination (no black markings allowed).

SIZE- a mature cow in milk should weigh 1400 lbs.

6. Side leak: *Slight discrimination.*

7. Abnormal milk (bloody, clotted, watery): *Possible discrimination.*

LACK OF ADEQUATE SIZE

Slight to serious discrimination. (Note: Guernsey does not discriminate for lack of size.)

EVIDENCE OF SHARP PRACTICE

(Refer to PDCA Code of Ethics)

1. Animals showing signs of having been tampered with to conceal faults in conformation and to misrepresent the animal's soundness: *Disqualification.*
2. Uncalved heifers showing evidence of having been milked: *Slight to serious discrimination.*

TEMPORARY OR MINOR INJURIES

Blemishes or injuries of a temporary character not affecting animal's usefulness: *Slight to serious discrimination.*

OVERCONDITIONED

Slight to serious discrimination.

FREEMARTIN HEIFERS

Disqualification.

FOUR MAJOR BREAKDOWNS

Understanding major breakdowns and ideal conformation is an important, fundamental skill when learning to judge cattle.

Frame - 15% **Dairy Strength - 25%** **Rear Feet and Legs - 20%** **Udder - 40%**

Frame (15%)

The skeletal parts of the cow, with the exception of rear feet and legs. Listed in priority order, the descriptions of the traits to be considered are as follows:

- | | |
|--|--|
| Rump
<i>(5 points)</i> | <ul style="list-style-type: none">• Should be long and wide throughout.• Pin bones should be slightly lower than hip bones with adequate width between the pins.• Thurls should be wide apart.• Vulva should be nearly vertical and the anus should not be recessed.• Tail head should set slightly above and neatly between pin bones with freedom from coarseness. |
| Front End
<i>(5 points)</i> | <ul style="list-style-type: none">• Adequate constitution with front legs straight, wide apart, and squarely placed.• Shoulder blades and elbows set firmly against the chest wall.• The crops should have adequate fullness blending into the shoulders. |
| Back /Loin
<i>(2 points)</i> | <ul style="list-style-type: none">• Back should be straight and strong, with loin broad, strong, and nearly level. |
| Stature
<i>(2 points)</i> | <ul style="list-style-type: none">• Height including length in the leg bones with a long bone pattern throughout the body structure.• Height at withers and hips should be relatively proportionate.• Age and breed stature recommendations are to be considered. |
| Breed Characteristics
<i>(1 point)</i> | <ul style="list-style-type: none">• Exhibiting overall style and balance.• Head should be feminine, clean-cut, slightly dished with broad muzzle, large open nostrils and strong jaw. |

Dairy Strength (25%)

A combination of dairyness and strength that supports sustained production and longevity. Major consideration is given to general openness and angularity while maintaining strength, width of chest, spring of fore rib, and substance of bone without coarseness. Body condition should be appropriate for stage of lactation. Listed in priority order, the descriptions of the traits to be considered are as follows:

- | | |
|-------------------------------------|---|
| Ribs
<i>(8 points)</i> | <ul style="list-style-type: none">• Wide apart.• Rib bones wide, flat, deep, and slanted towards the rear.• Well sprung, expressing fullness and extending outside the point of elbows. |
| Chest
<i>(6 points)</i> | <ul style="list-style-type: none">• Deep and wide floor showing capacity for vital organs, with well-sprung fore ribs. |
| Barrel
<i>(4 points)</i> | <ul style="list-style-type: none">• Long, with adequate depth and width, increasing toward the rear with a deep flank. |
| Thighs
<i>(2 points)</i> | <ul style="list-style-type: none">• Lean, incurving to flat and wide apart from the rear. |
| Neck
<i>(2 points)</i> | <ul style="list-style-type: none">• Long, lean, and blending smoothly into shoulders; clean-cut throat, dewlap, and brisket. |
| Withers
<i>(2 points)</i> | <ul style="list-style-type: none">• Sharp with chine prominent. |
| Skin
<i>(1 point)</i> | <ul style="list-style-type: none">• Thin, loose, and pliable. |

Rear Feet and Legs (20%)

Feet and rear legs are evaluated. Evidence of mobility is given major consideration. Listed in priority order, the descriptions of the traits to be considered are as follows:

- Movement**
(5 points)
 - The use of feet and rear legs, including length and direction of step.
 - When walking naturally, the stride should be long and fluid with the rear feet nearly replacing the front feet.

- Rear Legs-Side View**
(3 points)
 - Moderate set (angle) to the hock.

- Rear Legs-Rear View**
(3 points)
 - Straight, wide apart with feet squarely placed.

- Feet**
(3 points)
 - Steep angle and deep heel with short, well-rounded closed toes.

- Thurl Position**
(2 points)
 - Near central placement between the hip and pin bones.

- Hocks**
(2 points)
 - Adequate flexibility with freedom from swelling.

- Bone**
(1 point)
 - Flat and clean with adequate substance.

- Pasterns**
(1 point)
 - Short and strong with some flexibility, having a moderate, upright angle.

Udder (40%)

The udder traits are evaluated. Major consideration is given to the traits that contribute to high milk yield and a long productive life. Listed in priority order, the descriptions of the traits to be considered are as follows:

- Udder Depth**
(10 points)
 - Moderate depth relative to the hock with adequate capacity and clearance.
 - Consideration is given to lactation number and age.

- Rear Udder***
(9 points)
 - Wide and high, firmly attached with uniform width from top to bottom and slightly rounded to udder floor.

- Teat Placement**
(5 points)
 - Squarely placed under each quarter, plumb and properly spaced.

- Udder Cleft**
(5 points)
 - Evidence of a strong suspensory ligament indicated by clearly defined halving.

- Fore Udder***
(5 points)
 - Firmly attached with moderate length and ample capacity.

- Teats**
(3 points)
 - Cylindrical shape; uniform size with medium length and diameter; neither short nor long is desirable.

- Udder Balance and Texture**
(3 points)
 - Udder floor level as viewed from the side.
 - Quarters evenly balanced; soft, pliable, and well collapsed after milking.

***Note: In the Holstein breed, an equal emphasis is placed on fore and rear udder (7 points each). All other traits are the same as listed above.**

TERMINOLOGY

When starting to evaluate cattle at home or during judging practices, it can be helpful to begin by just placing two cows at a time. Decide which is more correct, and develop reasons for placing one cow over the other. As you become more comfortable placing two animals in a timely fashion, work your way up to placing four animals in a class.

Developing a broad vocabulary of dairy judging terminology can help you give accurate, thorough reasons and help people to know exactly what you are talking about, even if the cattle aren't right in front of you. Start by learning a few terms describing each trait, then as you develop confidence, try and learn a few new terms each week.

Frame

RUMP

See Page 37 for the Dairy Terminology Activity Worksheet

Positive Terms

- more nearly level from hooks to pins
- more correct slope from hips to pins
- less slope from hips to pins
- longer and leveler from hooks to pins
- wider through the rump
- wider in the pins (thurls or hips)
- more width at the thurls
- less prominent in her tail setting
- more correct tail head setting
- neater at the tail head
- tail head placed more neatly between the pins
- flatter tail head setting
- thurls more centrally/correctly placed

Negative Terms

- shorter, narrower rump
- narrower through the hooks and pins
- sloping and pinched in the rump
- more sloping in the rump
- higher at the pins
- reverse tilt to the rump
- higher and coarser at the tail head

Rump Angle



A high pinned cow



An ideal rump - long, wide, and nearly level



A sloping rump which is much lower in the pins than the hips

Rump Width



Wide-rumped cow



Cow that is narrow in the pins

FRONT END (SHOULDERS)

Positive Terms

- smoother blending shoulder
- tighter at the point of shoulder
- fuller at the point of elbow
- tighter at the point of elbow
- less prominent at the point of elbow
- fuller in the crops
- more harmonious blending through the front end
- blending more smoothly into the fore rib
- blends more smoothly throughout

Negative Terms

- coarser shoulder
- looser shoulder
- open behind the shoulders
- more prominent at point of shoulder
- winged-shoulders
- weaker in the crops



Shoulders which are set smoothly and tightly into the body



Shoulders could blend more smoothly into the body



Winged shoulders which are not attached tightly to the body

BACK/LOIN

Positive Terms

- straighter down her topline; especially stronger in the loin (or chine)
- leveler down the topline
- straighter and stronger over the top
- harder down her topline
- stronger in the loin
- stronger in the chine

Negative Terms

- weak in the loin
- easy over the topline
- weaker over the topline
- weak in the chine and crops



Strong topline with a rump that is nearly level from hooks to pins



Very weak loin noticing also that she is weak in the crops and the pins are much higher than the hooks



A heifer that is weak in the loin

STATURE

Positive Terms

- taller, more upstanding
- taller at the point of withers
- more upstanding in the front end
- excels in size and scale

Dairy Strength

BODY CAPACITY

Positive Terms

- stronger, more powerful cow
- more strength and power
- more powerful through the front end
- more total cow
- more length of body
- longer from end to end
- longer bodied cow
- greater spring of rib
- more spring of rib
- more spring of fore rib
- more width and strength throughout
- more width and strength in the chest
- wider through the chest floor
- stronger through the front end
- fuller in the crops
- fuller behind the shoulders
- fuller in the heart girth
- deeper in the chest
- deeper in the barrel
- deeper in the rear rib
- deeper in the fore rib
- deeper in the flank
- more depth of body
- more depth of fore and rear rib

Negative Terms

- less spring of rib
- shallow fore and rear rib
- narrow chest floor
- pinched in the chest
- weak front-ended cow
- weak crops
- shallow in the heart
- short-bodied
- shallow-ribbed
- shallow-bodied
- narrow, weak, and frail
- ribs lacking in fullness and spring
- tight-ribbed



Excellent depth and spring of both fore and rear ribs on a heifer noticing the openness and angle to the rib



Shallow-ribbed animal



Adequate fore rib, but lacking depth of rear rib and openness of rib

HEAD

Positive Terms

- more breed character about the head
- more alertness and style
- more dish to the face
- wider muzzle
- more femininity about the head
- more style about the head
- cleaner, more refined head

Negative Terms

- plainer about the head
- narrow in the muzzle
- parrot jaw
- wry face
- head lacks style and breed characteristics
- roman-nosed
- coarse about the head
- short and plain about the head

DAIRYNESS

Positive Terms

- more dairyness throughout
- more angularity
- more refined
- milkier appearance
- cleaner and more angular
- longer and more open
- more openness of rib
- more open in her conformation
- longer and leaner neck
- less excess conditioning
- less excess flesh
- less throaty
- sharper over the shoulders
- sharper at the point of withers
- cleaner down the topline
- more prominent about the hips and pins
- more well defined over hip and pin bones
- flatter (leaner or thinner) in the thighs
- more incurving in the thighs
- flatter boned

Negative Terms

- carries more condition throughout
- shorter, thicker neck
- thicker thighs
- tighter ribbed
- throatier
- plainer
- carrying excess flesh in the throat, brisket or dewlap
- coarser and thicker about her head and neck
- thick and fleshy about the throat and neck



Excellent sharpness over withers



Thick over the withers

Rear Feet and Legs

Positive Terms

- tracks straighter when viewed from behind
- more correct set to the hock
- less set to the hock
- more set to the hock
- cleaner hock
- more refined hock
- more feminine and clean about the hock
- cleaner leg bone
- flatter hock
- more strength and substance of bone
- stands more squarely on her rear legs
- walks more comfortably on her rear legs
- walks more freely on the rear legs
- more flex of the hock and strength of pastern
- exhibits more mobility/more mobile
- tracks straighter
- more correct foot shape
- steeper foot angle
- stronger in the pasterns
- deeper in the heel

Negative Terms

- shallow heel
- weak pasterns
- too much set to her rear legs when viewed from the side
- post-legged
- toes out
- coarse boned
- more coarseness at the hock
- thick in the hock
- puffy about the hock
- lacking substance of bone
- hocks in when viewed from the rear

Rear Legs - Side View



Straight-legged cow



Heifer with a correct set to her hock



Cow with a more sickle hock

Rear Legs - Rear View



Cow with slight hock-in



Cow that tracks straight when viewed from behind

Feet



Correctly shaped hoof with adequate depth of heel and a level sole



Weak pasterns, with a shallow heel



Lacking depth of heel and strength in pasterns

Udder

GENERAL UDDER TERMS

Positive Terms

- she has an advantage in stage of lactation, with more bloom and capacity of udder (be sure to only use this if you're sure of the stage of lactation)
- milkier appearing udder
- larger, more capacious udder
- showing more bloom
- shows more apparent udder quality
- more prominent veining
- exhibits more bloom and capacity of udder
- more shapely udder

UDDER CLEFT

Positive Terms

- more youthful udder
- carries her udder higher above the hocks
- stronger center support in the udder
- deeper crease in her udder
- deeper cleft in the udder
- more clearly defined halving in the udder
- stronger center attachment
- more crease in the udder
- more cleft in the udder
- leveler on the udder floor
- less quartering when viewed from the side
- more nearly level on the udder floor when viewed from the side
- more balance and symmetry to the udder
- more balance of udder

Negative Terms

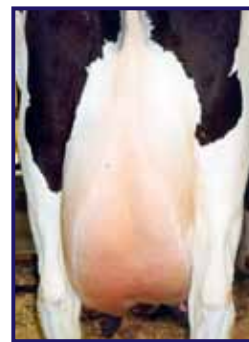
- weaker attachments
- less halving
- stale (udder lacks bloom)
- udder lacking cleavage
- lacks udder support
- light quarter (be sure to note which quarter)
- flatter on the udder floor
- lacks a crease to the udder when viewed from the rear



Mature udder with strong cleft



Shallow udder lacking depth and capacity in the rear quarters



Udder lacking strength of the median suspensory ligament

REAR UDDER

Positive Terms

- higher in the rear udder attachment
- wider in the rear udder attachment
- higher and wider in the rear udder
- stronger in the rear udder attachment
- fuller at the top of the rear udder
- more fullness to the rear udder
- more symmetry and balance of rear udder
- more balance of rear quarters
- more shapely rear udder
- more capacious rear udder

Negative Terms

- poorly attached rear udder
- lower in the rear udder attachment
- pinched and narrow rear udder
- weak and narrow in the rear udder attachment



High, wide rear udder with strong udder cleft



Lower rear udder that gets narrow at the top

TEATS

Positive Terms

- more desirable teat size, shape, and/or placement
- more desirable teat shape
- teats hang more perpendicular to the ground
- teats more squarely placed on the quarters
- teats placed more centrally beneath the quarters
- teats more neatly set on the udder floor
- teats placed more correctly beneath each quarter
- more nearly correct front teat placement
- more correct teat placement as viewed from the rear

Negative Terms

- funnel, or pencil-shaped teats
- teats too long
- teats too small
- teats placed on the edge of the quarters
- teats hang too close together



Teats set too close together



Centrally placed



Rear teats set too wide

FORE UDDER

Positive Terms

- fore udder held closer to the body wall
- fore udder blends more smoothly into the body wall
- snugger in the fore udder attachment
- tighter fore udder attachment
- smoother fore udder attachment
- more firmly attached fore udder
- stronger fore udder attachment
- longer, more tightly attached fore udder
- longer fore udder
- less bulgy fore udder

Negative Terms

- loosely attached fore udder
- shorter in the fore udder
- narrower in the rear udder attachment
- bulgier fore udder
- unbalanced fore udder
- light in the left or right rear quarter



Tightly attached fore udder



Adequately attached udder that could blend more smoothly into the body wall



Poorly attached, loose fore udder

JUDGING DAIRY HEIFERS

Choosing a heifer with the most correct conformation and future potential can be a daunting task. Not only is the udder not developed on heifers, but as they grow, certain faults may disappear while new ones become apparent. Animals who placed at the top of their calf class may not develop the depth of rib desired by dairy producers, and plain yearlings may grow into stylish mature cows. The goal should be to choose heifers which will develop into productive and profitable cows.

When placing heifer classes in a judging contest or at a show:

In the showing, judges should not place any emphasis on a heifer's udder promise, unless it exhibits obvious, severe problems. Heifers which excel in the other categories of the Unified Scorecard, such as frame, dairyness, feet and legs and body capacity typically develop into desirable mature cows. It is important to remember that senior yearlings may carry some extra weight because they are close to calving. Likewise, young calves do not need as much body because they have time to develop.

When choosing replacement or show heifers for your project:

When buying replacement heifers or choosing a show heifer, it's important to realize that, although the udder has not developed, its appearance can be a good indicator of future promise or problems. The udder of an open heifer should not show any signs of development. Characteristics which a person should look for when considering a heifer's udder are correct teat size and placement with the teats pointing slightly inward. Teats which point slightly inward are an indication that the heifer will develop a strongly attached udder. Avoid selecting heifers whose udders are fatty or overdeveloped, as this could lead to poor udder quality and cause difficulties during milking. It may also be a sign of infection or being sucked at a younger age. Strutting teats and flat udder floors are signs of a potentially weak median suspensory ligament which could shorten the productive life of a dairy cow.

See the next page for a Dairy Calf and Heifer Scorecard for guidance on evaluating traits.



DAIRY CALF AND HEIFER SCORECARD

As there is no official scorecard for judging dairy heifers, the following has been developed by Ted Halbach, coach of the University of Wisconsin-Madison dairy judging team, as a guide.

GENERAL APPEARANCE 35%

Attractive individuality and harmonious blending of parts, with the exception of rear feet and legs, is evaluated. Listed in priority order, the descriptions of the traits to be considered are as follows:

Style and Balance – Harmonious blending of parts; proportionate height, length and depth.

Rump – Long and wide throughout with pin bones slightly lower than hip bones. Thurls wide apart and centrally placed between hip bones and pin bones. Tailhead set slightly above and neatly between pin bones. Tail free from coarseness. The vulva is nearly vertical.

Back – Straight and strong; loin – broad, strong and nearly level; slight arch preferred.

Front End – Adequate constitution with front legs straight, wide apart and squarely placed. Shoulder blades and elbows set firmly against the chest wall. The crops should have adequate fullness.

Breed Characteristics – Clean cut head, broad muzzle with large, open nostrils, and strong jaw.

DAIRY CHARACTER 25%

Evidence of potential milking ability is evaluated. Major consideration should be given to general openness and angularity without weakness, flatness of bone, and freedom from coarseness. Listed in priority order, the descriptions of the traits to be considered are as follows:

Ribs – Wide apart. Rib bones wide, flat, deep, and slanted toward the rear.

Thighs – Lean, incurving to flat and wide apart from the rear.

Withers – Sharp with chine prominent.

Neck – Long, lean and blending smoothly into shoulders; clean cut throat, dewlap, and brisket.

Skin – Thin, loose and pliable.

Allowance should be made for winter and fall yearlings to carry more condition as they approach calving.

REAR FEET AND LEGS 20%

Feet and rear legs are evaluated. Evidence of mobility is given major consideration. Listed in priority order, the descriptions of the traits to be considered are as follows:

Movement – The use of feet and rear legs, including length and direction of step. When walking naturally, the stride should be long and fluid with the rear feet nearly replacing the front feet.

Rear Legs-Side View – Moderate set (angle) to the hock.

Rear Legs-Rear View – Straight, wide apart with feet squarely placed.

Feet – Steep angle and deep heel with short, well-rounded closed toes.

Thurl Position – Near central placement between the hip and pin bones.

Hocks – Adequate flexibility with freedom from swelling.

Bone – Flat and clean with adequate substance.

Pasterns – Short and strong with some flexibility, having a moderate, upright angle.

SIZE 20%

Growth, vigor and good health are evaluated. Major consideration should be given to height at the point of withers. The description of the trait to be considered is as follows:

Stature – Height including length in the leg bones with a long bone pattern throughout the body structure; height at withers and hips should be relatively proportionate.

Barrel – Long, deep and wide; depth and spring of rib increasing toward the rear with a deep flank.

Chest – Deep and wide floor with well sprung fore ribs blending into the shoulders.

PREPARING FOR A JUDGING CONTEST

Learning to judge and competing in judging competitions can be an exciting and rewarding experience for anyone with an interest in dairy cattle. Here is some information you should know when getting started:

Typical Judging Contest Format

- In a dairy judging contest, there are four animals in each class.
- Animals in a class will all be the same age and breed, but within one judging contest, you will likely be judging different ages and breeds of cattle.
- In a typical judging contest, you will be given 12 minutes to place a non-reasons class, and 15 minutes to place a class that you have to give reasons on.
- In most contests, animals are lead by volunteers. During the class, animals will circle in both directions, as well as be lined up side-by-side and head-to-tail, so you will have an opportunity to see all sides of an animal and evaluate her movement.

Other Tips for Success

- Practice evaluating cattle from a distance. Most judging contests will have a ring that the animals will be lead around, and judging contestants will not be allowed to get very close to the animals.
- Viewing the animals from a distance can often help you see how well the cows fit into your “profile” of an ideal animal, which can help you make your first impression placing more easily.
- At the end of a judging class, you will have to turn in a card with your official placing on it to a contest official. At the beginning of a contest when you get your placings cards, write your name (or contestant number) on them right away, so you don’t forget to do it later in the contest.
- Don’t rush to turn in your placing card early during a class. Wait to mark it until you are absolutely sure of your placing.
- Make sure that your card is marked clearly and always double check to ensure you marked the placing that you wanted to.

Helpful Hints in Deciding on a Placing

Here are a some “helpful hints” if you find yourself stuck on deciding a placing in a class:

- Look to see if there is a cow that is an “easy winner” or an easy bottom animal. If so, you can eliminate that animal from your consideration and focus on placing the other three animals in the class.
- Another tactic is to look for “pairs” in a class. Are two of the animals obviously more correct than the other two? If you can decide which “half” (top or bottom) of the class an animal should place in you can be confident you will not take a large cut (even if you place the top or bottom pair of animals opposite of the official judge).
- If you are stuck on a pair of cows and are having a hard time deciding how to place them, break them down with the fundamentals of the Unified Scorecard (see page 5). Which cow wears the better udder? Which cow walks on a more correct set of feet and legs? Those two traits make up 60% of the Scorecard (Udder alone is worth 40%), so if you can say that one cow is more correct in those two areas than another, chances are you should place her higher.
- If you are confused and can’t decide what to do, step back, take a break breath, clear your head, and start judging the class again as if it’s your first time seeing it. If you feel yourself begin to get flustered, relaxing for a moment and clearing your mind can often help you re-focus and make decisions.
- Unless you are sure that you are totally wrong, never change your placing at the very last minute. Trusting your instincts is important in judging, and it’s not likely you will be able to give accurate reasons on a placing if you don’t have the cows in front of you to take notes.

PREPARING & PRESENTING ORAL REASONS

The job of a judge is not complete when the class is placed. An important part of judging is justifying your placing to the audience, exhibitors or contest officials. Whether it be at a judging contest or a dairy show, a judge must be able to explain his or her decisions. This takes practice in using proper terms in an organized, and interesting style.

Judging is not an exact science. If it was, there would be no need for contests or shows. No two people judge exactly the same. When you are giving your reasons, you need to believe that your placing is the official placing. Have confidence in your placing and convince the official or audience that you examined the animals and have reasons for placing them as you did. Your goal in giving reasons is not to change their minds, but to make them understand your point of view and why the animals were placed as they were.

Confidence is very important when giving reasons. It takes time to develop, but if you practice, you will acquire the determination and poise you need. Start by visualizing yourself as the official judge. See yourself through every process of judging a class and giving reasons. Watch yourself making good, confident decisions. After placing a class, visualize yourself with the microphone or in front of the official giving reasons.

Starting Out

Official reasons are a brief, yet complete statement which justifies your placing. Examine the cows closely in the class so you can visualize each cow in your mind. When giving reasons, make notes about special features that help you remember the animals from the class. Such features can be a different color pattern, colored eartag or an extremely good or poor trait of the animal.

Effective reasons contain comparative terms rather than descriptive terms. Judges should compare each animal to the one placed above it and use terms that tell why. Descriptive terms should only be used to help others visualize exactly which cow you are referring to.

The following is an example of comparative reasons versus descriptive reasons. Think about which set gives you a more complete view of the two cows in question.

Comparative Reasons Example (correct format to use)

"In my top placing, 1 places over 2 for her advantage in overall style and balance. 1 blends more smoothly from neck to shoulder, and shoulder to barrel, as well as being harder down her topline, especially in the loin, and having a more desirable slope from hooks to pins. Additionally, one stands on a cleaner, straighter hock, faulting the sickle hock of 2. 1 is much higher and wider in her rear udder attachment and has a deeper udder cleft. Finally, 1 shows more dairyness throughout, being longer and leaner in her neck, sharper at the point of withers, and being silkier and more incurving in her thigh.

I will admit that 2 is a much taller, more upstanding cow and is deeper in the barrel than 1."

Notice how in this example, the two cows are clearly being compared to one another, and clear reasons are given as to why 1 is a superior animal to 2. Comparative terms typically end in "-er" or include the word "more" in front of them. Compare the underlined words above to the words used in the descriptive example, and notice the difference.

Descriptive Reasons Example (incorrect format to use)

"1 places over 2. 1 has good style, and she blends well through the shoulder. She has a straight topline and good rump angle. She also has a good set to her hock. Furthermore, 1 has a high rear udder and a deep udder cleft. Finally, 1 shows good dairy character.

2 is fairly tall and has an extremely deep rib. 2 has good teat placement but is rather low and loose in her rear udder attachment. She also has too much set to her hock and a poor foot angle. Additionally, 2 is weak in her fore udder attachment and carries too much condition today."

This example tells you about the two cows, but doesn't describe to the official (or audience listening) why 1 places over 2 in this class.

Accuracy

Accuracy cannot be stressed enough when giving reasons. Giving reasons that are inaccurate will deduct points more quickly than any other factor. If two animals are very close in a specific trait, it is not worth mentioning unless you use the term, “slight advantage” or “small difference.” Accuracy must be considered when selecting the terms to compare or describe specific traits.

A common mistake is to use only a few terms to describe entire categories. For example the term, “size, stretch and scale” is used to compare the height, length and depth of an animal. This term is appropriate only if one animal is taller, longer, and deeper than the other. If the animal is only taller and longer, and not deeper you must use a term which says only that.

People often put the two terms “higher and wider rear udder” together, however, it is not always true. It is quite common for one cow to have a higher but not wider rear udder or vice versa. One way to prevent using inaccurate phrases is to develop a large term vocabulary. When it comes time to give reasons you will be able to use the term that best describes the trait.

Presentation

Speak clearly and loud enough so you are easily understood. It is difficult to be convincing if you speak softly and are unsure of yourself. Eye contact with the official is another important point to remember while giving reasons. To help establish good eye contact, practice giving reasons or just talking while looking in a mirror. You are your biggest critic so if you can maintain eye contact with yourself, it becomes easier to keep eye contact with the official.

Beginners’ Reasons Tips

- Always speak in the present tense in your reasons
- When referring to a cow, just use her number. For example, just say “2” instead of “the 2 cow”, “cow 2” or “number 2”.
- Less is more! Look at a set of reasons you have given in the past and see if there are areas where you used more words than necessary. The fewer words you use, the easier your reasons are to say, and the cleaner you sound. For example, just use “udder” instead of saying “mammary system” and use “dairyness” instead of “dairy character”. Using extra words does nothing but make your reasons longer (and can possibly confuse the person listening), so make your reasons complete and accurate, but don’t worry about making them last a certain amount of time, and watch out for extra words.
- Your reasons should sound conversational. Read a set of reasons that you have given aloud, and make sure that they sound like you would actually talk if you were having a conversation. It is common (but unnecessary) to insert the word “do” into a grant statement. For example, “I do grant...” or “I do admit...” – your reasons will be more conversational (and less wordy) if you take out that extra word. Small changes can make a big difference!
- Be careful not to overuse the word “today.” When you do use it, make sure you are only referring to things that could be different between the two cows tomorrow (or in a month).
 - For example, it would be acceptable to use it occasionally when talking about traits such as body condition and bloom of udder, which can change with stage of lactation.
 - You should not use “today” when discussing traits such as stature and rump angle, as they are not likely to change enough to make a difference in the placing over time.
- Never use the word “better” in a set of reasons.

Taking Notes to Develop Your Reasons

Whether you realize it or not, during every class you place, you are making mental notes that help you sort through the animals and decide upon your final placing. Official reasons are simply organizing those mental notes and saying them aloud. If you have a hard time developing reasons for a placing, or come up with more grants than reasons, you may want to change your placing.

At the beginning of each class, jot down a few notes about each animal to help you remember the cattle and what they looked like. These are usually descriptive, such as “tall black cow,” “short, dairy, balanced cow,” and “white cow, best udder.”

Once you have decided on a placing or have an idea for a placing, start taking your notes. These should help you visualize the class and each animal in it. Design your notes in a way that suits you (*see worksheets on pages 39 and 40*). Everyone’s technique is different – some people write every detail down, while others simply need to list a couple of traits.

Generally, you are allowed between 12 and 15 minutes to judge a reasons class, which does not always allow a lot of time to take notes. Writing out entire sentences or phrases takes a long time (and takes up a lot of space on your paper), so it might be helpful to develop some abbreviations for traits that you commonly use.

See pages 39 and 40 for
the Beginners’ Reasons
and Note-taking
Worksheets

Abbreviation Examples

Fore Udder Attachment	4U att
Higher and Wider Rear Udder	HWRU
Feet and Legs	F&L
Teat Placement	TP
Udder Depth	UD
Hips/Hooks and Pins	H > P
Style and Balance	S & B

Basic Format for Giving Reasons

- | | |
|--------------|--|
| INTRODUCTION | 1. State the class (age and breed) (<i>Example: Four-Year-Old Holstein Cows</i>) |
| | 2. State your placing |
| | 3. General statement about the entire class or how the class may have sorted itself into pairs (if applicable) |
| BODY | 4. Outstanding traits about the top cow (if she was an “easy winner”) |
| | 5. Discussion of your placing for each pair of cows (using comparative terms) |
| CONCLUSION | 6. General statement which justifies placing the last cow on the bottom |
| | 7. Re-stating the class and placing |

In the following sections, you will find examples of specific portions of a set of reasons.

Introduction

Pick one introduction that suits you and is comfortable for you to say, and use it to introduce all of your sets of reasons.

- I placed this class of Holstein Aged Cows 1-2-3-4.
- My placing is 1-2-3-4 for this class of Holstein Aged Cows.
- After evaluating this class of Holstein Aged Cows, my placing is 1-2-3-4.
- 1-2-3-4 is my placing for this class of Holstein Aged Cows.

For a class where one cow is the top cow in nearly every trait:

“I place this class of Two-Year-Old Brown Swiss Cows 1-2-3-4. 1 easily sorts herself to the top of the class today wearing the best udder, and for her distinct advantages in size and scale, and style and balance.”

Look for the placing, age and breed of cows being judged. Also note how the reasons-giver made it clear that this cow was easily the best in the class and why.

When the class has two cows that are very close in the top placing and can be considered a pair:

"1-2-3-4 is my placing for this class of Four-Year-Old Milking Shorthorn Cows. In a close top pair, 1 and 2 handily placed at the top of the class today with their style and balance and tremendous angularity. However, I give the nod to 1 today because she is a taller, longer bodied cow."

This example introduces the class, and explains how the class had a pair of cows that both deserved recognition for their traits. It describes how the top pair was superior to the bottom pair and then goes on to tell why 1 placed over 2.

Body

The body or main portion of your reasons is where you compare the animals, and has three parts:

- first over second
- second over third
- third over fourth

In each part you will compare the two cows using comparative terms. The most important reason for your placing should be first.

For each placing, you should also give a grant. The grant statement points out a trait in which the lower placed animal excels. Look at the following example of a proper set of reasons for the placing of 1 over 2.

"In a close top pair, 1 places over 2, for her advantages in dairyness and angularity. She is more open through her rib structure, longer and leaner in her neck, sharper over her withers, more well defined over her hips and pins, and more incurving in her thigh. She is also much higher and fuller in her rear udder, noting the lack of bloom in 2's rear udder, and longer in her fore udder attachment. Additionally, 1 is more nearly level from hooks to pins, noting the low pins of 2, and has a more desirable tail head setting.

I will admit that 2 keeps this a close placing as she has a more desirable set to her hock, noting the sickle leg of 1, and is stronger over her topline, especially in the loin."

Your oral reasons should sound natural and conversational. Each pair should have three solid reasons why one cow places over another, and at least one grant back for a trait where the lower placed cow was more correct than the higher placed cow.

Within the body of your reasons, you will want to use a variety of connecting terms to help them flow smoothly. Following are some examples of connecting and grant terms.

Connecting Term Examples

furthermore...
in addition to this...
equally as important...
yes, 2 is also...

one also...
more importantly...
moreover...
I recognize that...

Grant Term Examples

I admit that 2...
however, 2 has...
I do realize...
this is a close placing, however, because...
I did see that 2 is...
noting that 2 is more...

I grant that 2...
I did not fail to recognize...
yes, I admit...
I do concede...
giving 2 the advantage in...

Conclusion

The conclusion is very important in a set of reasons, because it is the last impression you will make on an audience or reasons judge, so you want it to be a good one! Keep the conclusion short, and don't focus too much on negative qualities of the last place animal. You should give one sentence justifying why the last place animal falls into that spot, and then restate your placing for the class. Remember to give a strong closing and re-state your final placing with confidence. Here are some examples of appropriate conclusions:

For a cow that is correct, but just isn't as stylish as the other animals in her class:

"I justify placing 4 at the bottom of this class, although I admire her tall front end and correctness of feet and legs, I feel she lacks overall style and balance to earn a higher placing.

For these reasons, I placed this class of Two-Year-Old Brown Swiss cows 1-2-3-4."

For a cow that is clearly the poorest quality in the class and has some major functional faults:

"I feel justified in leaving 4 at the bottom of the class, because although she is a very angular cow, she lacks the overall strength of udder attachments, udder quality, and soundness of feet to merit a higher placing.

These are my reasons for placing this class of Two-Year-Old Brown Swiss cows 1-2-3-4."

Note that in both examples, an explanation is given as to why the last place cow was placed there, without dwelling too much on her negative traits, and always mentioning a positive quality that the cow possessed. When discussing the last place cow, try to view it from the perspective of the exhibitor, and how that person might feel if they heard you describe their cow.

For more examples of complete sets of reasons, see the example below, as well as the practice class reasons on page 30.

The following is an example of a complete set of reasons that might be given by a beginner. Notice the different segments – introduction, body, and conclusion.

Jersey Aged Cows Sample Reasons

INTRODUCTION 4-1-3-2 is my placing for this class of Jersey Aged Cows.

BODY In a close top pair, 4 places over 1 for her advantages in the udder. She has a smoother fore udder attachment, a higher, wider rear udder attachment and a deeper udder cleft. She also is deeper in the barrel and wider through her chest.

I will admit that 1 is leveler in the rump.

Next, 1 places over 3 because she shows more dairyness, being sharper over the withers, more incurving in her thigh, and carrying less condition over her ribs. 1 also carries her udder higher above the hock and is tighter in her fore udder attachment. Additionally, 1 has a more desirable teat size and shape.

I grant that 3 is a deeper bodied cow and shows more spring of rib.

3 places over 2 in my bottom pair for that advantage in body capacity. 3 is a more powerful cow, has more overall depth of body and sweep to her rib. She is also a taller, longer cow, has a more desirable set to her hock, and is higher in her rear udder.

I concede that 2 has a strong crease to her udder.

CONCLUSION I feel justified in leaving 2 at the bottom of the class as she lacks the overall style and balance, as well as udder quality to earn a higher placing.

For these reasons, I place this class of Jersey Aged Cows 4-1-3-2.

Tips to Take Your Reasons to the “Next Level”

Identifiers

Using “identifiers” is an easy way to add a little “extra” to your reasons, and demonstrate to the reasons official that you remember the cattle. Identifiers are things that are obviously different about one cow than all of the others. Make sure that the difference is apparent to anyone that would look at the class so the official doesn’t get confused. Identifiers can be used in place of the animal’s number to help add variety to your reasons.

Examples of identifiers:

- Black cow, white cow, speckled cow
- Roan cow (Milking Shorthorns), red cow
- Lighter colored cow (Jerseys or Brown Swiss)
- Cow wearing the black halter
- Cow with the docked tail / short switch
- Cow with the yellow ear tag
- Stub horned cow
- Cow with the wrapped hoof
- Cow with the neck chain

Connectors

Connectors help greatly with the flow of your reasons, but are often overlooked by novice judges. Examples of connectors:

- “In a close top placing...”
- “Next, in my middle pair...”
- “Finally, in a more logical bottom placing...”

Using terms such as these, rather than just jumping from one pair to another helps catch the reason listener’s attention and ensures that they know which placing you are describing. Using these connecting terms often also gives you a chance to pause briefly and refocus yourself between pairs. This is a good place to note if you felt a pair was close, or an easier placing.

Two-Way Traits

Describing two-way traits is another way to add more detail to your reasons and demonstrate your knowledge of dairy cattle anatomy. A two-way trait is one that the intermediate of a trait is most desirable. This gives you a chance to add detail, noting the fault of the lower placing animal. For example:

- “1 has a more correct set to her hock, noting the sickle/straight leg of 2”
- “1 is more nearly level from hooks to pins, faulting the low/high pins of 2”
- “1 has a more desirable teat length, noticing the long/short teats of 2”
- “1 has a more desirable teat placement, recognizing the widely/closely placed teats of 2”

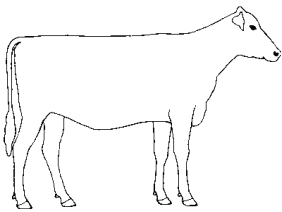
PRACTICE JUDGING CLASS

On the following pages is a practice judging class of Five-Year-Old Holstein cows. Decide on your placing for the class, and mark the judging card below. After you determine your placing, practice taking reasons notes for a pair in the class. A sample completed note-taking worksheet for this class can be found on page 29. Taking proper notes will help when you are formulating your reasons.

When you are finished with your placing and notes, you can view the official placing, what a set of notes for the class might look like, and an example set of reasons for the class.

For more practice classes, the Holstein Foundation recommends obtaining copies of the *Hoard's Dairyman* Annual Cow Judging Contest. That activity could be a great way to kick off your judging practices starting in the winter months.

Mark your placing on the card below for the practice class.

Judging Card		
	1234	
	1243	
	1324	
	1342	
	1423	
	1432	
	Contestant Name	2134
	_____	2143
	Class #	2314
	#1	2341
	_____	2413
	Class	2431
	5-year-olds	3124
	_____	3142
Breed	3214	
Holstein	3241	
_____	3412	
Score	3421	
_____	4123	
	4132	
	4213	
	4231	
	4312	
	4321	

Reasons Notes

Practice Class - Holstein Five-Year-Olds

#1



#2





#4



#3

Sample: Completed Notes for Practice Class

Note how the person here wrote just enough in their reasons to help them develop complete thoughts. Also see how notes were made on each cow of identifiers (color, etc.) and major traits that stood out.

Breed: <u>Holstein</u>		First Impression: <u>4</u> <u>3</u> <u>2</u> <u>1</u>		
Age: <u>5-year-olds</u>		Final Placing: <u>4</u> <u>3</u> <u>1</u> <u>2</u>		
1 1. white cow 2. long teats 3. low rear udder	^{close} <u>4, 3</u>	1. <u>higher rear udder, deeper cleft</u> 2. <u>more youthful udder, more correct TP</u> 3. <u>more dairyness - topline, hooks & pins, thigh, ribs</u> Grant <u>3 stronger loin, level H>P</u>		
	2 1. narrow front end 2. shallow body 3. sickle legs	^{easier} <u>3, 1</u>	1. <u>more S&B, blends smoother</u> 2. <u>taller, harder top</u> 3. <u>HWRU, tracks straighter</u> Grant <u>1 longer bodied</u>	
		3 1. wide rear udder 2. thicker cow 3. powerful	^{closer} <u>1, 2</u>	1. <u>taller, longer, deeper</u> 2. <u>Wider throughout</u> 3. <u>More correct leg (2=sickle)</u> Grant <u>More correct TP</u>
4 1. best udder 2. mostly black 3. very dairy			Leave <u>2</u> last Admire <u>HWRU</u>	leave last because 1. <u>lacks depth, width, length and correct F&L</u>

The official placing of the Holstein Five-Year-Olds is 4-3-1-2. The cuts are 2-5-3. The following is an example of official reasons written by a recognized dairy judge for the Holstein Five-Year-Olds practice class.

Holstein Five-Year-Olds Practice Class Official Reasons

I placed this class of Holstein 5-year-olds 4-3-1-2.

I found this class logically sorted itself into two pairs.

In my first pair, 4 places over 3 on her advantage in udder. She is higher in her rear udder attachment, deeper in her udder cleft, and carries her udder higher above her hocks, with a more correct teat placement. 4 also shows more dairyness today being sharper and cleaner down her topline, hooks, pins and thurls, more incurving in her thigh and more open in her rib structure.

I do grant 3 is stronger in her loin and leveler from hooks to pins.

In a more logical placing, 3 places over 1 as she has more style and balance throughout as well as more smoothness and blending of parts. 3 is taller at the point of withers and harder down her top. Further, 3 is deeper in her heart and barrel and tighter at the point of elbow. In addition, 3 is higher and wider in her rear udder attachment and tracks straighter on both her front and rear legs.

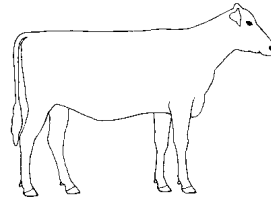
I do admit 1 is a longer cow from end to end.

In a closer final placing 1 gets the nod over 2. The white cow is much taller, longer, deeper and wider throughout her frame and carries that width from her front end out through her rump. 1 also has a more correct set to her leg, noting 2 has too much set to her hock.

However, 2 has a more correct teat placement when viewed from the rear and is deeper in her udder cleft. 2 has a higher and wider rear udder, but she lacks the overall depth, width and length of frame and correctness of rear feet and legs to merit a higher placing.

These then are my reasons for placing this class of 5-year-old Holstein cows 4-3-1-2.

Judging Placing Scorecard



Class #

#1

Class

5-year-olds

Breed

Holstein

1234	18
1243	20
1324	26
1342	36
1423	30
1432	38
2134	15
2143	17
2314	20
2341	27
2413	24
2431	29
3124	31
3142	41
3214	28
3241	35
3412	48
3421	45
4123	37
4132	45
4213	34
4231	39
4312	50
4321	47

Assigning Cuts & Scoring Placings

Knowing how to score creates an awareness of how you are doing in practices and contests.

The official judge for a contest of four animals will give the official placing, such as 3-2-4-1. After placing the class, the official judge needs to decide how difficult it was to place each pair. The number value given for the difficulty in placing a pair is known as a cut. The judge will assign a higher cut to easier placings with a lower cut on more difficult placings. An example of cuts would be 7-2-5. This would mean that the first and last pair were easy placings because they had a higher cut with the middle pair being a difficult placing. The highest total that cuts can add up to (adding the three numbers together) on a class is 15. The highest score that can be given for placing a class correctly is 50. Your score is determined by subtracting the cuts from that perfect score.

When scoring, always use your placing as the guide. You will then compare your placing to the official placing by setting up a table of six comparisons like in the examples. The six comparisons are your 1st place animal to your 2nd place animal, your 1st to your 3rd, your first to your 4th, your 2nd to your 3rd, your 2nd to your 4th, and your 3rd to your 4th. After writing down the six comparisons ask this question to each comparison: I placed ___ over ___ is that correct? If the answer is yes, you do not lose points. If the answer is no, you lose the cut total between those two numbers in the official placing. Once you have figured out how many points you have dropped, you will subtract that number from fifty. This will result in your final score. Here are some examples to help you understand.

Example 1

Official Placing: 3-2-4-1

Cuts: 7-2-5

If you placed the class 2-3-1-4, your score would be figured as follows:

Placing	Your Answer	Points deducted
Is 2 over 3?	NO	-7
Is 2 over 1?	YES	
Is 2 over 4?	YES	
Is 3 over 1?	YES	
Is 3 over 4?	YES	
Is 1 over 4?	NO	-5
Score: 50 - 12 = 38		

Example 2

Official Placing: 3-2-4-1

Cuts: 7-2-5

If you placed the class 4-3-1-2, your score would be figured as follows:

Placing	Your Answer	Points deducted
Is 4 over 3?	NO	-7, -2
Is 4 over 1?	YES	
Is 4 over 2?	NO	-2
Is 3 over 1?	YES	
Is 3 over 2?	YES	
Is 1 over 2?	NO	-2, -5
Score: 50 - 18 = 32		

Example 3

Official Placing: 3-2-4-1

Cuts: 7-2-5

If you placed the class 1-4-2-3, your score would be figured as follows:

Placing	Your Answer	Points deducted
Is 1 over 4?	NO	-5
Is 1 over 2?	NO	-2, -5
Is 1 over 3?	NO	-7, -2, -5
Is 4 over 2?	NO	-2
Is 4 over 3?	NO	-7, -2
Is 2 over 3?	NO	-7
Score: 50 - 44 = 6		

LINEAR EVALUATION

Linear scoring is another tool that can be used to evaluate the functional soundness of dairy cattle. With this type of evaluation, a specific numerical value (on a scale of 1 to 50) is assigned to each of 17 different traits. It is important to note that 50 is not the ideal score for every trait. For some traits (called "two-way" traits), such as Rear Legs – Side View and Rump Angle, an intermediate score of 25 is considered ideal. For example, when considering Rear Legs – Side View, a cow with a very posty leg would be given a score of 1, and a cow with an extremely sickle leg would be given a score of 50. Since we prefer an animal that has an intermediate set to her hock, a cow with an ideal leg set would be given a score of 25.

Activity: Look at the pictures on the next two pages, and list what the ideal score would be for each trait:
(answers found on page 43)

Traits where the ideal score would be 25:

1. _____
2. _____
3. _____
4. _____
5. _____

Traits where the ideal score would be 50:

1. _____
2. _____
3. _____
4. _____
5. _____
6. _____
7. _____
8. _____
9. _____
10. _____
11. _____
12. _____

**See Page 41 for a
Practice Linear Evaluation
Score Sheet**

Final Score

In the Holstein classification system, a cow's final score is based on the five major classification categories (or breakdowns as they are also called). Linear evaluators numerically score each category on a scale of 1 to 100, based on how similar they are to the True Type Model cow. The final score is a sum of the five major breakdowns, weighted as follows:

COWS

Front End/Capacity	20%
Dairy Strength	20%
Rump	5%
Feet & Legs	15%
Udder	40%

BULLS

Front End/Capacity	40%
Dairy Strength	25%
Rump	10%
Feet & Legs	25%

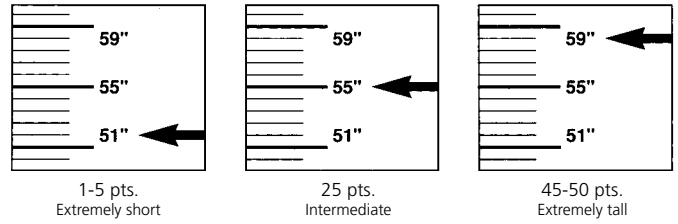
In assigning major breakdown scores, the linear evaluator should consider factors such as age, number of lactations and stage of lactation. The numerical score of the for Final Score breaks down into the following categories:

Excellent (EX)	90-97 points	Good (G)	75-79 points
Very Good (VG)	85-89 points	Fair (F)	65-74 points
Good Plus (GP)	80-84 points	Poor (P)	50-64 points

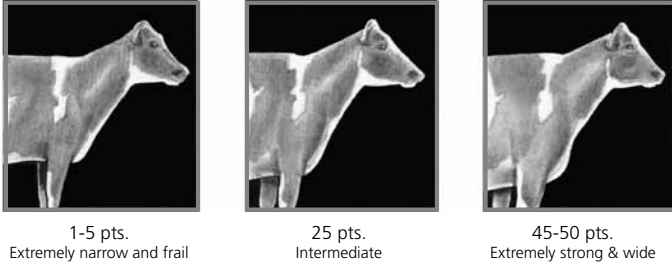
Linear Descriptive Traits

Here are guidelines for the appropriate point values that should be given to the variations of the traits:

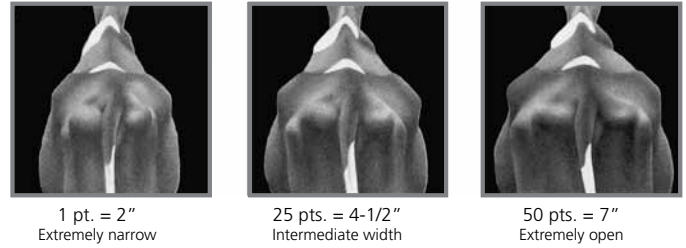
STATURE - ST



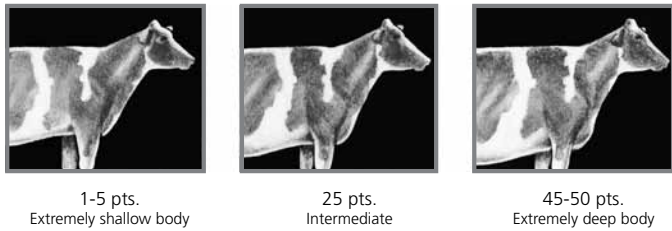
STRENGTH - SR



RUMP WIDTH - RW



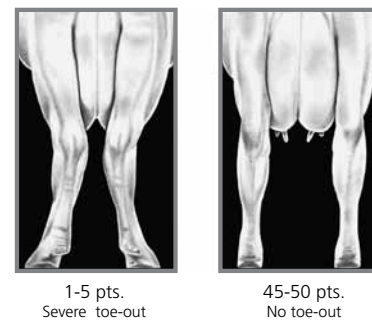
BODY DEPTH - BD



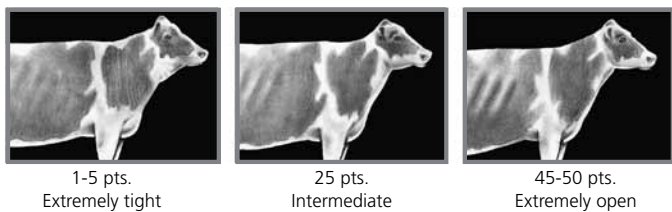
REAR LEGS, SIDE VIEW - LS



REAR LEGS, REAR VIEW - RL



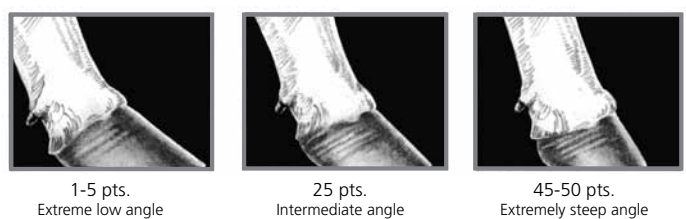
DAIRY FORM - DF



RUMP ANGLE - RA



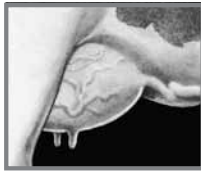
FOOT ANGLE - FA



FORE UDDER ATTACHMENT - FU



1-5 pts.
Extremely loose



25 pts.
Intermediate strength



45-50 pts.
Extremely snug & strong

FRONT TEAT PLACEMENT - TP



1-5 pts.
Extremely wide placement
on outside of quarter



25 pts.
Centrally placed
on quarter



45-50 pts.
Base of teats on
extreme inside of quarter

REAR UDDER, HEIGHT - UH



1-5 pts.
Extremely low

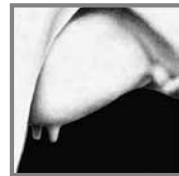


25 pts.
Intermediate height



45-50 pts.
Extremely high

TEAT LENGTH - TL



1-5 pts.
1-1/4 inches or smaller



25 pts.
2-1/4 inches



45-50 pts.
3-1/4 inches or longer

REAR UDDER, WIDTH - UW



1-5 pts.
Narrow rear udder



25 pts.
Intermediate width



45-50 pts.
Extremely wide rear udder

UDDER CLEFT - UC



1-5 pts.
Weak cleft



25 pts.
Intermediate



45-50 pts.
Extremely strong cleft

UDDER DEPTH - UD



1-5 pts.
Very deep udder floor
well below hocks



25 pts.
Udder floor
above hocks



45-50 pts.
Extreme height of udder
floor above hocks

REAR TEAT PLACEMENT - RT



1-5 pts.
Extremely wide placement
on outside of quarter



25 pts.
Centrally placed
on quarter

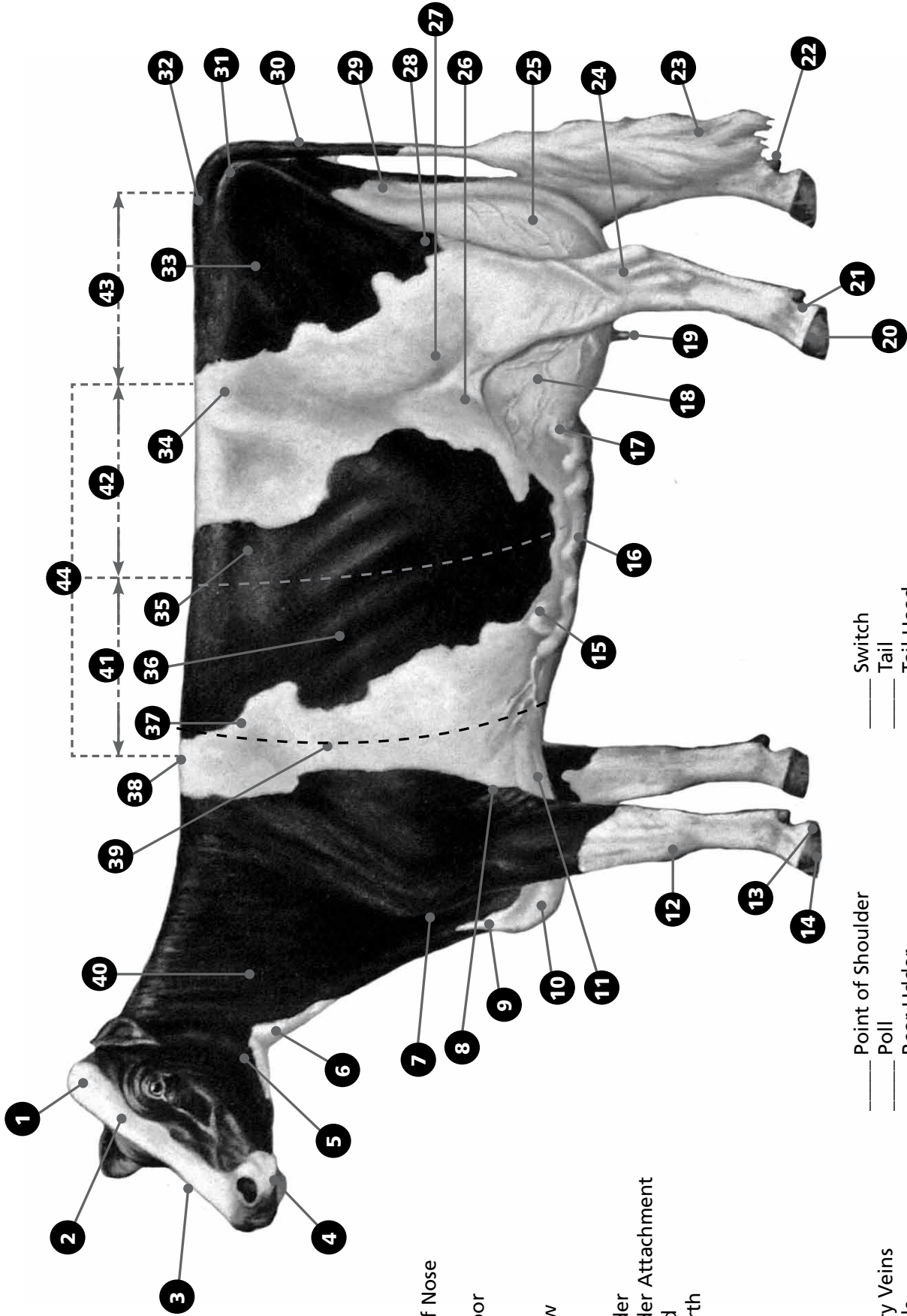


40-45 pts.
Base of teats on
extreme inside of quarter

Practice Activities & Coaches Resources

Activity: Parts of a Cow

Label all of the parts of the cow. To check your answers, see the PDCA Unified Scorecard on page 5.



- ___ Back
- ___ Barrel
- ___ Bridge of Nose
- ___ Brisket
- ___ Chest Floor
- ___ Chine
- ___ Crops
- ___ Dew Claw
- ___ Dewlap
- ___ Flank
- ___ Fore Udder
- ___ Fore Udder Attachment
- ___ Forehead
- ___ Heart Girth
- ___ Heel
- ___ Hip
- ___ Hock
- ___ Hoof
- ___ Jaw
- ___ Knee
- ___ Loin
- ___ Mammary Veins
- ___ Milk Wells
- ___ Muzzle
- ___ Neck
- ___ Pastern
- ___ Pin Bones
- ___ Point of Elbow
- ___ Point of Shoulder
- ___ Poll
- ___ Rear Udder
- ___ Rear Udder Attachment
- ___ Ribs
- ___ Rump
- ___ Sole
- ___ Stifle
- ___ Switch
- ___ Tail
- ___ Tail Head
- ___ Teats
- ___ Thigh
- ___ Throat
- ___ Thurl
- ___ Withers

What's Your Favorite Term?

The beauty of putting together and delivering a set of reasons is that there are many different ways to describe animals and their characteristics. You shouldn't have to use the same phrase twice in one set. It is important to develop a strong vocabulary of terms to use in your reasons. Once you have your "term library" developed, you will find that your reasons come together much more easily.

Use this worksheet to record a few of your favorite positive ways to describe the traits listed. If you need some ideas, see the section on Terminology, beginning on page 9. Once you get comfortable using the terms you list below, challenge yourself to expand your vocabulary even more!

Dairyness/Dairy Character

1. _____
2. _____
3. _____

Fore Udder

1. _____
2. _____
3. _____

Rear Udder

1. _____
2. _____
3. _____

Teats

1. _____
2. _____
3. _____

Other udder terms

1. _____
2. _____
3. _____

Feet & Legs

1. _____
2. _____
3. _____

Body Capacity

1. _____
2. _____
3. _____

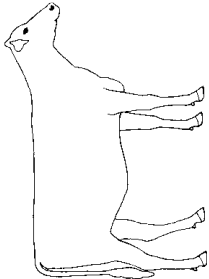
Other general terms that you like

1. _____
2. _____
3. _____

Share your favorite terms with your teammates and practice using them in an example. Find two cows that show what you are talking about. Practice saying the terms so that you feel comfortable and confident in using them, and try to incorporate a few of your newly learned terms into your next set of reasons. Make it a goal to try to incorporate a new term into each judging practice or set of reasons you give. Before you know it, you will have developed an impressive dairy judging vocabulary.

Placing Cards

Placing Card



Contestant Name _____

Class # _____

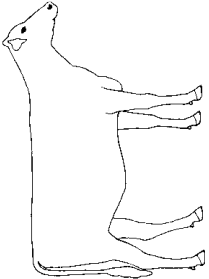
Class _____

Breed _____

Score _____

1234	
1243	
1324	
1342	
1423	
1432	
2134	
2143	
2314	
2341	
2413	
2431	
3124	
3142	
3214	
3241	
3412	
3421	
4123	
4132	
4213	
4231	
4312	
4321	

Placing Card



Contestant Name _____

Class # _____

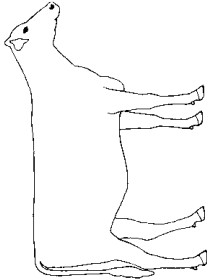
Class _____

Breed _____

Score _____

1234	
1243	
1324	
1342	
1423	
1432	
2134	
2143	
2314	
2341	
2413	
2431	
3124	
3142	
3214	
3241	
3412	
3421	
4123	
4132	
4213	
4231	
4312	
4321	

Placing Card



Contestant Name _____

Class # _____

Class _____

Breed _____

Score _____

1234	
1243	
1324	
1342	
1423	
1432	
2134	
2143	
2314	
2341	
2413	
2431	
3124	
3142	
3214	
3241	
3412	
3421	
4123	
4132	
4213	
4231	
4312	
4321	

Beginners' Reasons Worksheet

Use this worksheet to help you develop a template for giving reasons. Once you get a style down for taking notes, you can duplicate this template in any notebook you use to make notes on a class.

Breed: _____ **Age of Class:** _____

Your Placing: _____

In my top placing, _____ places over _____ because:

1. _____
2. _____
3. _____

(Grant) I will admit that _____:

1. _____

Next, in my middle placing, _____ places over _____ because:

1. _____
2. _____
3. _____

(Grant) I do realize that _____:

1. _____

Finally, in my bottom placing, _____ places over _____ because:

1. _____
2. _____
3. _____

(Reasons for placing bottom cow last) I realize that _____ is

1. _____

I feel that she lacks:

1. _____
2. _____

...to earn a higher placing.

Note-Taking Worksheet

Use this worksheet to help you develop a note-taking template for your reasons. Once you get a style that works for you, this can be easily re-created in any notebook you use to take notes on a class.

Breed: _____

First Impression: _____

Age: _____

Final Placing: _____

1

1. _____

2. _____

3. _____

_____ / _____

1. _____

2. _____

3. _____

Grant _____

2

1. _____

2. _____

3. _____

_____ / _____

1. _____

2. _____

3. _____

Grant _____

3

1. _____

2. _____

3. _____

_____ / _____

1. _____

2. _____

3. _____

Grant _____

4

1. _____

2. _____

3. _____

Leave _____ last

Admire _____

1. _____

leave last because

1. _____

Name: _____

Practice Linear Evaluation Score Sheet

Use this sheet to practice assigning linear scores to animals. It is a good idea to learn the abbreviations for the different traits listed so that during a contest you don't get confused by the abbreviations. See the next page for a guide to scoring each trait.

Linear Traits																		
Animal Identification	ST	SR	BD	DF	RA	RW	LS	RL	FA	FU	UH	UW	UC	UD	TP	TL	RT	Final Score

Example of linear contest scoring:

Since linear scoring involves assigning exact numbers for each trait, a small margin of error is often given to contestants for their scores of each trait. The following is an example of how a linear contest might be scored:

- Contestant's score is within 2 points of the official score: 5 points for each trait
- Contestant's score is within 5 points of the official score: 2.5 points for each trait
- Contestant is more than 5 points +/- of the official score: 0 points for each trait

Linear Descriptive Traits

FORM

Stature (ST)	Strength (SR)	Body Depth (BD)	Dairy Form (DF)
50 -----	50 -----	50 -----	50 -----
45 - Extremely Tall 58-60"	45 - Extremely Strong and Wide	45 - Extremely Deep	45 - Extremely Open
40 -----	40 -----	40 -----	40 -----
35 - Tall	35 - Strong	35 - Deep Body	35 - Open
30 -----	30 -----	30 -----	30 -----
25 - Intermediate -----55"	25 - Intermediate	25 - Intermediate	25 - Intermediate
20 -----	20 -----	20 -----	20 -----
15 - Short	15 - Narrow	15 - Shallow	15 - Tight
10 -----	10 -----	10 -----	10 -----
5 - Extremely Short 50 - 52"	5 - Extremely Narrow	5 - Extremely Shallow	5 - Extremely Tight
1 -----	1 -----	1 -----	1 -----

RUMP

LEGS AND FEET

Rump Angle (RA)	Rump Width (RW)	Rear Legs, Side View (LS)	Foot Angle (FA)
50 ----- 5 1/4"	50 ----- 7" above	50 -----	50 -----
45 - Extremely Sloped	45 - Extremely Wide	45 - Extremely Sickled	45 - Extremely Steep
40 ----- 3 3/4"	40 ----- 6"	40 -----	40 -----
35 - Moderate Slope	35 - Wide	35 - Slightly Sickled	35 - Steep
30 ----- 2 1/4"	30 ----- 5"	30 -----	30 -----
25 - Slight Slope ----- 1 1/2"	25 - Intermediate ----- 4 1/2"	25 - Intermediate	25 - Intermediate ----- 45°
20 ----- 3/4"	20 ----- 4"	20 -----	20 -----
15 - Level Rump	15 - Slightly Narrow	15 - Slightly Posty	15 - Slightly Low
10 ----- 3/4" high	10 ----- 3"	10 -----	10 -----
5 - High Pins	5 - Extremely Narrow	5 - Extremely Posty	5 - Extremely Low
1 ----- 2 1/4" high	1 ----- 2" below	1 -----	1 -----

UDDER

Fore Udder Attachment (FU)	(Between RU and Vulva) Rear Udder Height (UH)	Rear Udder Width (UW)	Udder Cleft (UC)	Udder Depth (UD)
50 -----	50 ----- 7.0"	50 ----- 8"	50 ----- -- 2 3/4"	50 ----- 7"
45 - Extremely Strong	45 - Extremely High	45 - Extremely Wide	45 - Extremely Strong 2 1/2"	45 - Extremely Shallow
40 -----	40 ----- 8.4"	40 ----- 7"	40 -----	40 ----- 5"
35 - Strong	35 - High	35 - Wide	35 - Strong ----- 1 3/4"	35 - Well Above Hock
30 -----	30 ----- 9.8"	30 ----- 6"	30 -----	30 ----- 3"
25 - Intermediate	25 - Intermediate ----- 10.5"	25 - Intermediate ----- 5 1/2"	25 - Intermediate --- 1 1/4"	25 - Intermediate ----- 2"
20 -----	20 ----- 11.2"	20 ----- 5"	20 -----	20 -----
15 - Loose	15 - Low	15 - Narrow	15 - Weak ----- -- 3/4"	15 - Udder Floor at Hock even
10 -----	10 ----- 12.6"	10 ----- 4"	10 -----	10 -----
5 - Extremely Loose	5 - Extremely Low	5 - Extremely Narrow	5 - Extremely Weak flat	5 - Extremely Deep --(-2")
1 -----	1 ----- 14.0"	1 ----- 3"	1 ----- (-1 1/4")	1 ----- (-3")

TEATS

RESEARCH TRAITS

Front Teat Placement (TP)	Teat Length (TL)	Rear Legs, Rear View (RL)	Udder Tilt (UT)
50 -----	50 ----- 3 1/2"	50 -----	50 ----- 2"
45 - Extremely Close	45 - Extremely Long	45 - Tracks Extremely Straight	45 - Extreme Forward Tilt
40 -----	40 ----- 3"	40 -----	40 ----- 1"
35 - Close	35 - Long	35 - Nearly Straight	35 - Slight Forward Tilt
30 -----	30 ----- 2 1/2"	30 -----	30 ----- level
25 - Centrally Placed	25 - Intermediate ----- 2 1/4"	25 - Slight Hock-In	25 - Nearly Level ----- 1/2"
20 -----	20 ----- 2"	20 -----	20 ----- 1"
15 - Wide	15 - Short	15 - Definite Hock-In	15 - Rearward Tilt
10 -----	10 ----- 1 1/2"	10 -----	10 ----- 2"
5 - Extremely Wide	5 - Extremely Short	5 - Extreme Hock-In	5 - Extreme Rearward Tilt
1 -----	1 ----- 1"	1 -----	1 ----- 3"

MAJOR BREAKDOWN AND FINAL SCORE BRACKETS					
Major Breakdown	Excellent (E)	90-100 Points	Final Score	Excellent	90-97 Points
	Very Good (V)	85-89		Very Good	85-89
	Good Plus (+)	80-84		Good Plus	80-84
	Good (G)	75-79		Good	75-79
	Fair (F)	65-74		Fair	65-74
	Poor (P)	1-64		Poor	50-64
Major Breakdowns and Weightings	FR:	Frame	FEMALES 15%	MALES 30%	
	DC:	Dairy Character	20%	25%	
	BC:	Body Capacity	10%	20%	
	FL:	Feet and Legs	15%	25%	
	UD:	Udder	40%		
	FS:	Final Score			

Source: University of Wisconsin-Madison (www.uwex.edu/ces/dairyouth/nonhtml/linear.pdf)

Answer Key for Activity Sheets

Linear Activity from Page 32

Traits where the ideal score would be 25

1. Rear Legs, Side View
2. Rump Angle
3. Front Teat Placement
4. Teat Length
5. Rear Teat Placement

Traits where the ideal score would be 50

1. Stature
2. Strength
3. Rump Width
4. Body Depth
5. Dairy Form
6. Rear Legs, Rear View
7. Foot Angle
8. Fore Udder Attachment
9. Rear Udder Height
10. Rear Udder Width
11. Udder Cleft
12. Udder Depth

Parts of the Cow from Page 36

To check your answers for Parts of the Cow, see the PDCA Scorecard on page 5.

Holstein Foundation Dairy Judging Workbook (vol. 2)

References

Dairy Cow Unified Scorecard. Purebred Dairy Cattle Association. Madison, WI. 2009.

Holstein Association USA. *Linear Descriptive Traits*. 2009.

Holstein Foundation *Dairy Judging Workbook*, vol. 1. 2006.

"University of Wisconsin-Madison Dairy Judging Dairy Calf & Heifer Scorecard."
Ted Halbach, University of Wisconsin-Madison. 2010.

University of Wisconsin-Madison Dairy Judging Linear Descriptive Traits Worksheet.
Web. <<http://www.uwex.edu/ces/dairyouth/old/nonhtml/linear.pdf>>.

Cow Skeleton Clipart. 2009. Florida Educational Technology Clearinghouse. Florida Center for Instructional Technology. <http://etc.usf.edu/clipart/12300/12383/skeletoncow_12383.htm>.



www.holsteinfoundation.org